

# BREAST SHAPES

## NON-WIRE TEEN BRAS ARE GREAT FOR THESE BREAST SHAPES



### Athletic

Works well for wider breasts with more muscles and less breast tissue



### Slender

Best for lean and small breasted teens who prefer light support

## UNDERWIRE TEEN BRAS ARE GREAT FOR THESE BREAST SHAPES



### Round

For small rounded breasted teens who prefer a more flattering look



### Athletic

Works well for wider breasts with more muscles and less breast tissue

## FULL CUP BRAS ARE GREAT FOR THESE BREAST SHAPES



### Bell

Breasts are thinner at the top and fuller at the bottom



### Round

Breasts are equally full at the top and bottom

## FULL CUP 3/4 CUP BRAS ARE GREAT FOR THESE BREAST SHAPES



### Relaxed

Nipples typically hang downward and breast tissue tend to be more loose



### Teardrop

Tend to have more fullness at the bottom than at the top

## LIFTING BRAS ARE GREAT FOR THESE BREAST SHAPES



### Teardrop

Tend to have more fullness at the bottom than at the top



### East West

If your nipples point outward in opposite directions

# STYLES

### Carly Non-Wire

Color: Pastel Shapes, Php 249



### Mikee Underwire

Color: Butterfly Print Php 279



### Louise Non-Wire Full Cup

Color: Red Dahlia Php 339/379



### Jodi Underwire Bra

Color: Red, Php 359



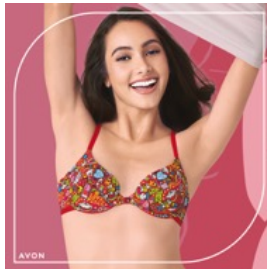
### Ivette Underwire Lifting Bra

Color: Black, Php 459



### Carrie Underwire

Color: Colorful Graffiti Php 279



### Louella Underwire Full Cup Bra

Color: Blue 359/399



### Hazel Underwire Bra

Color: Black, Php 359



### Clarina Underwire Shaping & Lifting

Color: Teal Green, Php 459



AVON  
SHAPED  
FOR  
MORE